

2015

Training@V6



30D, Jalan PJS 1/46, Petaling Utama, Petaling
Jaya, 46000 Selangor Darul Ehsan
Tel: +603-7783 3459 | Fax: +603-7781 6818
Email : training@mawea.com.my
Website : www.mawea.com.my



Contents

Course	Subject	Code	Duration (day)
<u>2.7</u>	<u>Training@V6</u>		
	CATIA V5 to V6 Mechanical Design Transition	TV6-A01	2
	CATIA V6 Mechanical Design Fundamentals	TV6-A02	5
	CATIA V6 Mechanical Design Advanced	TV6-A03	4
	CATIA V6 Surface Design Essentials	TV6-A04	5

Please do not hesitate to call **MAWEA** at **03-7783 3459** for further info or **FAX to 03-77816818** for registration.

MAWEA INDUSTRIES SDN. BHD. (356204-A)

30D, Jalan PJS 1/46, Petaling Utama, 46000 Petaling Jaya, Selangor, Malaysia.

Tel: +603 - 7783 3459 Fax: +603 - 7781 6818 Email: training@mawea.com.my

www.mawea.com.my



TRAINING@V6 – CATIA V5 TO V6 MECHANICAL DESIGN TRANSITION

Venue : MAWEA TRAINING CENTRE (Petaling Jaya, Selangor)
Date : TBC
Duration/Time : 2 Days (9.00 a.m. to 5.00 p.m.)



Introduction

This course will teach you how to import data and search for models in the CATIA V6 database. You will learn how to perform modifications, check impacts and propagate modifications using a role-based scenario. You will also learn how to design in context, replace components with new versions and analyze a product.

Objectives

Upon completion of this course you will be able to:

- Connect to a CATIA V6 database and start a V6 session
- Import data into the V6 database
- Search for data in the database
- Open V6 parts for modification
- Propagate the modifications to the database
- Manage large assemblies and use assembly-level features
- Create and use catalogs
- Analyze and review a product

Contents

- Introduction
- Designing and Propagating Modifications
- Product Structure Management
- Designing in Context
- Reviewing the Design
- Master Project
- Shortcuts
- Glossary



Please do not hesitate to call **MAWEA** at **03-7783 3459** for further info or **FAX to 03-77816818** for registration.

MAWEA INDUSTRIES SDN. BHD. (356204-A)

30D, Jalan PJS 1/46, Petaling Utama, 46000 Petaling Jaya, Selangor, Malaysia.

Tel: +603 - 7783 3459 Fax: +603 - 7781 6818 Email: training@mawea.com.my

www.mawea.com.my



TRAINING@V6 – CATIA V6 MECHANICAL DESIGN FUNDAMENTALS



Venue : MAWEA TRAINING CENTRE (Petaling Jaya, Selangor)

Date : TBC

Duration/Time : 5 Days (9.00 a.m. to 5.00 p.m.)

Introduction

This course will teach you how to build parts using feature-based and functional modeling techniques and how to apply design rules in CATIA V6. This course also teaches you how to create a simple assembly, simulate a mechanism, create a rendered image and generate a simple detail drawing.

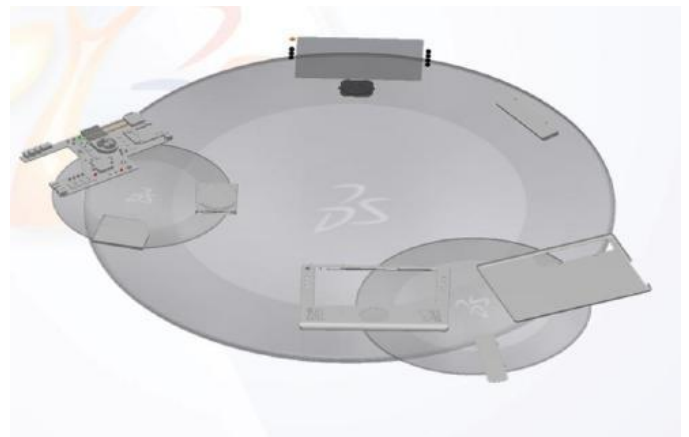
Objectives

Upon completion of this course you will be able to:

- Find documents in the V6 database
- Open, explore and save documents
- Create mechanical parts
- Check parts using existing rules
- Create and animate an assembly
- Create rendered images
- Produce a simple detail drawing

Contents

- Introduction
- Data Management
- Profile Creation
- Feature-based Modelling
- Review and Modification
- Functional Modelling
- Assembly Design
- Finalizing Design
- Drawing Creation
- Bill of Material
- Master Project
- Shortcuts
- Glossary



Please do not hesitate to call **MAWEA** at **03-7783 3459** for further info or **FAX to 03-77816818** for registration.

MAWEA INDUSTRIES SDN. BHD. (356204-A)

30D, Jalan PJS 1/46, Petaling Utama, 46000 Petaling Jaya, Selangor, Malaysia.

Tel: +603 - 7783 3459 Fax: +603 - 7781 6818 Email: training@mawea.com.my

www.mawea.com.my



TRAINING@V6 – MECHANICAL DESIGN ADVANCED



Venue : MAWEA TRAINING CENTRE (Petaling Jaya, Selangor)

Date : TBC

Duration/Time : 4 Days (9.00 a.m. to 5.00 p.m.)

Introduction

This course will introduce you to complex modeling techniques. You will learn how to create structured models and complex parts, how to define a product architecture and use it to design in an assembly environment. You will also learn how to manage complex product structures and product configurations, and create part families using parameterized models. Finally, you will learn how to analyze the impacts of design modifications and review a product.

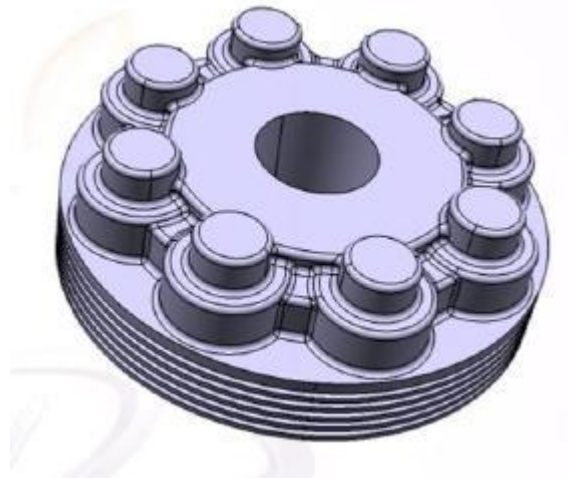
Objectives

Upon completion of this course you will be able to:

- Design complex parts
- Manage a complex product structure
- Design in an assembly environment
- Use assembly-level features
- Use product configurations
- Analyze impacts of modifications
- Analyze a product
- Review a product

Contents

- Introduction
- Design Complex and Structural Parts
- Designing in Context
- Managing Product Structures
- Sharing Information
- Reviewing the Design
- Master Project
- Shortcuts
- Glossary



Please do not hesitate to call **MAWEA** at **03-7783 3459** for further info or **FAX to 03-77816818** for registration.

MAWEA INDUSTRIES SDN. BHD. (356204-A)

30D, Jalan PJS 1/46, Petaling Utama, 46000 Petaling Jaya, Selangor, Malaysia.

Tel: +603 - 7783 3459 Fax: +603 - 7781 6818 Email: training@mawea.com.my

www.mawea.com.my



TRAINING@V6 – CATIA V6 MECHANICAL SURFACE DESIGN ESSENTIALS



Venue : MAWEA TRAINING CENTRE (Petaling Jaya, Selangor)

Date : TBC

Duration/Time : 5 Days (9.00 a.m. to 5.00 p.m.)

Introduction

This course will teach you how to use the FreeStyle and Generative Shape Design workbenches to create quality curves and surfaces. You will learn how to analyze the wireframe and surface quality, and rectify the detected defects. You will also learn how to work in a multi-model environment with published surfaces.

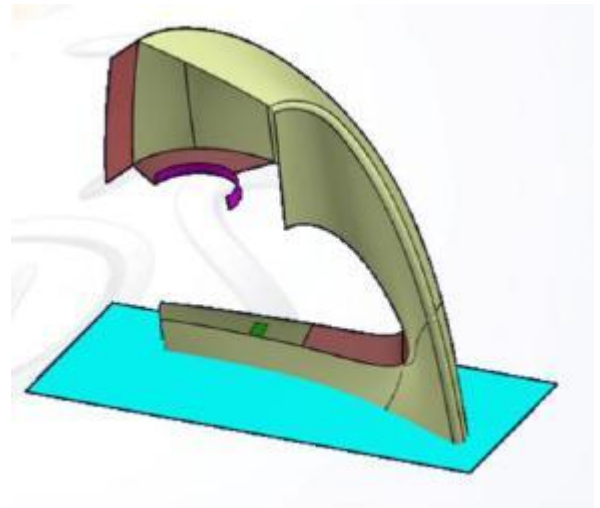
Objectives

Upon completion of this course you will be able to:

- Understand and use the FreeStyle and the Generative Shape Design workbenches
- Create good quality curves and improve the imported wireframe
- Create good quality surfaces based on sound wireframe geometry
- Assemble, re-limit and connect the surfaces smoothly to get the topology
- Analyze the surface quality and heal the defects
- Manage surfaces in a multi-model environment

Contents

- Creating Curves and Surfaces using Freestyle Shaper
- Analyzing the Curves and the surfaces
- Creating a Wireframe Geometry
- Creating Surfaces
- Surface Re-elimination and Connection
- The surface Check Tools
- Working in a Multi-model Environment
- Creating the Developed Shapes
- Master Project
- Shortcuts
- Glossary



Please do not hesitate to call **MAWEA** at **03-7783 3459** for further info or **FAX to 03-77816818** for registration.

MAWEA INDUSTRIES SDN. BHD. (356204-A)

30D, Jalan PJS 1/46, Petaling Utama, 46000 Petaling Jaya, Selangor, Malaysia.

Tel: +603 - 7783 3459 Fax: +603 - 7781 6818 Email: training@mawea.com.my

www.mawea.com.my

